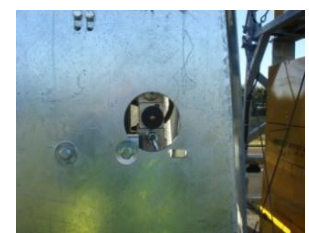


Vertical Lift Lighting Arrow



Specification

- Light Arrow system with vertically lifting top board
- Hydraulic lifting and lowering operation
- Lift/lower and sign designation controlled from in cab remote control
- Top light arrow consists of 25 amber flashing lights to show left/right arrow and 2 x 340mm xenon lamps interlinked with 610 arrow.
- Fully reflective lower sign board with 610 arrow.
- High grade micro-processor controlled electronics
- Galvanised steel framework with grey aluminium backing board for the light arrow.
- Fully BS and EN norms compliant and meets Chapter 8 requirements
- Available in Halogen and LED versions.