



Group of Companies



**STRENGTH IN ENGINEERING
DESIGN • MANUFACTURE • SERVICE**

**ABNORMAL LOAD TRAILERS • ROAD RAIL VEHICLES
ACCESS PLATFORMS • HIGHWAY VEHICLES
SPECIALIST HIRE • HIGHWAY MESSAGING
SPECIALIST TRANSPORT EQUIPMENT SOLUTIONS**



GROUP OF COMPANIES



TRAILERS

- Extensive range of trailers and plant bodies
- Specialist and military trailers
- Servicing, repairs and refurbishment
- Hire and lease

ACCESS PLATFORMS

- Authorised agent for three premium manufacturers
- Servicing and repairs

RAIL

- Supply and conversions of plant, vehicle and trailers
- Refurbishment, servicing and testing

HIGHWAYS

- Specialist traffic management vehicles, crash cushions, light arrows and sign boards
- Parts and service
- Hire

SPECIALIST ENGINEERING PROJECTS

- Design engineering
- Transport and material handling equipment solutions

ADVANCED VARIABLE MESSAGE SYSTEM

- Modular full matrix display signs
- Full contract solution



Group of Companies



The King Group has been providing cost effective transport equipment solutions worldwide for more than 55 years.

King are market leaders in:

- Heavy duty trailers for construction equipment and abnormal loads
- Access platforms
- Bespoke handling and transportation equipment for heavy and sensitive loads
- Traffic management vehicles
- Specialist transport equipment solutions.

Our project business is constantly supplying bespoke solutions across

all industries, including defence, aerospace, energy and nuclear.

King offer a comprehensive aftersales service for a wide range of commercial vehicles. Providing specialist service and parts, and operating a fleet of dedicated service vehicles offering local and nationwide coverage, we can assist you with an array of services including vehicle refurbishment, fault diagnosis, accident repairs and routine maintenance.

KING TRAILERS

King Trailers is the UK's largest manufacturer of trailers for abnormal loads up to **120 tonnes**. Whether it's construction equipment and plant or if you need to move any kind of non-standard load then King can provide the solution.

GTS STEPPFRAME LOWLOADERS

The GTS range is the UK's most popular stepframe lowloader and has been developed to provide 2, 3, 4 and 5-axle models with payload capacities to 70 tonnes.



GTS44

DB DRAWBARS

King drawbars have been designed in both tandem and tri-axle formats for use in many applications.



DRAWBAR

GTL RANGE

King offers a full range of 3 and 4 axle Hydroneck® lowloaders with payloads from 48 tonnes.



GTL RANGE



MTSE65

MTSE EXTENDING TRAILERS

King's extending centre spine Stepframe trailers are available to suit a range of payloads to 68.5 tonnes.



GTSS44

GTSS SEMI-SLOPING STEPFRAME

King's semi-slopers allow easy winching off of heavy plant, popular with road surfacing contractors.

MTS STEERING STEPFRAME

The King MTS range offers fixed-length centre spine steering Stepframes with 3 or 4 axles.

PLANT BODIES

The King low profile plant body is designed to be light weight without compromising strength.



PLANT BODY

KPS SLOPEDECK PLANT TRAILERS

Where a full uninterrupted slope is required the KPS range allows the easy loading of trucks and lighter loads.



KPS

HEAVY DUTY EXPORT TRAILERS

Extra heavy duty trailers for all non EU applications.

KING MILITARY

The King GTS100 semi-trailer is specifically designed to operate with the Oshkosh HET 1070F to transport main battle tanks up to 79 Tons. The design also meets existing legislation for peacetime movement requirements. The King GTS100 is fully compatible to work with other prime mover manufacturers.



In order to provide excellent maneuverability and reduce tyre scrub, five rows of axles are designed to steer hydraulically, operating from a kingpin sender unit while the remaining two axles are fixed. The centre spine chassis design maximises steering angles.

The GTS100's rugged design and full range of low maintenance features help ensure maintenance is simple and cost effective in the field, or anywhere repair facilities are limited.

In military logistics King is the provider of trailers for all kinds of loads from tracked equipment, plant, vehicles and helicopters – in fact any heavy or sensitive load.



KING SERVICE DIVISION

With a specialist service and parts division and a fleet of dedicated service vehicles offering local and nationwide coverage, King can assist you with an array of services including vehicle refurbishment, fault diagnosis, accident repairs and new parts. We understand the need to keep vehicles in good working order and on the road.

REFURBISHMENT

Refurbishments carried out by King are not restricted to King manufactured products, King can refurbish any make or type of trailer.



REPAIRS

After sales care ranges from accident and damage repairs to methods of maintaining your fleet and prolonging your trailer's life. King are able to offer a bespoke repair and refurbishment package to suit any budget or requirement and on all makes and specifications of trailers.

PARTS

All replacement parts used in a King repair are genuine King approved parts, which gives you assurance that the quality, durability and the superior vehicle aesthetic of the original product will be retained.

MILITARY

King has been a supplier of defence equipment to the UK Ministry of Defence and military customers worldwide. With a continued relationship, King now provides a comprehensive refurbishment programme, refurbishing the HET trailers used by the British Army.



Skyking is one of the leading suppliers of vehicle mounted and specialist access platforms with more than 1,500 Skyking vehicles in service in the UK. Providing working heights from 3 metres to 103 metres and mounted to a variety of vehicle types, including van, truck and tracked chassis, Skyking has a suitable solution for all of your access requirements.

Operating since 1996, Skyking continues to develop new product lines and has exclusive dealerships with a number of

leading brands. We are proud to offer first class machinery together with unrivalled sales and after sales support.



SERVICING AND REPAIRS

Skyking have the capability to look after all of your certificated and servicing works, from small scissor lifts to 103 metre lorry mounts. Servicing and repair work can be carried out at Skyking's head office facility or by our team of mobile engineers.



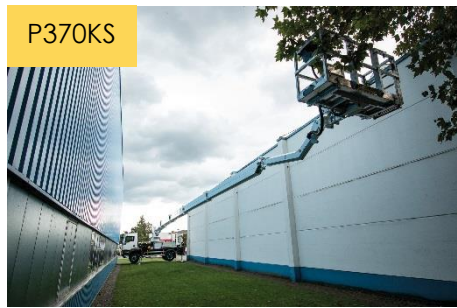
PALFINGER – the most innovative lifting solution at the highest technological level.

Palfinger is the only manufacturer worldwide to offer both non-insulated and insulated platforms reaching working heights of 10 metres to 103 metres for chassis weighing 3.5 tonnes to 60 tonnes, all supplied with a high specification cab that includes GPS, air-conditioning, bluetooth and telematic diagnostics.



P480

P370KS





SKYKING VAN MOUNTS – perfect for utility companies, CCTV operators, local authorities etc.

Skyking's own van mounts are simple to use and reliable. Our fleet includes 12.5 metres on a 3.5 tonne vehicle and 15 metres on a 5 tonne vehicle. We can also arrange custom racking to suit each client's requirements.



ISOLI AERIAL WORK PLATFORMS – 14 metres to 28 metres articulated platforms designed and built in Italy.

The addition of Isoli articulated platforms allows Skyking to offer a complete range of truck mounted access systems, covering all clients needs.

Since 1946 Isoli has been developing platforms, each designed to operate within the most effective working envelope for their overall height.



Since 2010 King Rail has developed a range of 'On-Track' plant and vehicles. King Rail have invested in a new 'On-Track Plant' development and test facility intending to reduce the cost and turnaround of rail conversion projects for their customers.

NEW CONVERSIONS

Powered by the road wheels or with independent drive, King Rail can provide a design and conversion service of your choice of new equipment. Fitted with GKD or Prolec RCI systems and compliant with Network Rail and London Underground, as well as other specifications.

REFURBISHMENT & UPGRADE

Working with original equipment manufacturers, converters and specialist product suppliers, King are your partners for road rail vehicle and on-track plant upgrades meeting RIS-1530-PLT issue 5 or 6. We have an experienced engineering team and extensive well-equipped facilities to carry out the most challenging of work.



NEW CONVERSIONS



REFURBISHMENT

RAIL TRAILERS

King have a history of supplying specialist road trailer solutions. This experience and understanding has been used to develop standard rail trailers for use on the infrastructure. The trailers are of a 5 metre long 20 tonne standard heavy-duty design which come equipped with failsafe air / hydraulic braking systems and an extensive list of options.

EQUIPMENT TESTING

Having established a dedicated rail plant testing facility, King Rail is in a position to offer a full testing service which includes

new excavator conversion to the latest Network Rail standards, upgrades and refurbishment of existing in-service equipment and a range of road rail trucks and associated equipment.

ROAD/RAIL TRUCKS

ZWEIWEG are the partners of choice for road rail trucks. With a series of high and low ride options for a selection of road vehicles, ZWEIWEG, through King, can provide equipment to meet all your needs.

ZWEIWEG

RAIL TRAILERS



ROAD/RAIL TRUCKS



EQUIPMENT TESTING



King Highway Products is a market leading supplier to the traffic management industry with a 'one stop shop' for all vehicle needs including crash cushions, light arrows, vehicle bodywork and signboards & trailers.



TMA-US

CRASH CUSHIONS

The **TMA-US** from Verdegro is the most popular crash cushion in today's market, competitively priced, reliable and lightweight.

The **Blade** crash cushion is the first to be sold in the UK that is tested to US MASH crash testing standards – the most demanding in the world. The Blade marks a step forward in crash cushion technology and is the safest product currently available.



BLADE

LIGHT ARROWS

Multiple light arrow solutions are available from King Highway, including the specially designed Vertical Lift Light Arrow Board and the widely used LP13 Mini Light Arrow, suitable for a range of applications, all using Nissen LED technology.



BLADE & RED X

The **Red X Light Arrow** from Verdegro, is the latest DfT approved light arrow, fitted in conjunction with a folding lower convoy vehicle panel.

TRAFFIC MANAGEMENT VEHICLE BODYWORK

Designed and built by King's in-house design team for a range of vehicles from 3.5 tonnes to 26 tonnes. Standard designs are available and all are built to high quality approved standards.



DE-MOUNTS

PARTS AND SERVICE

King Highway's dedicated parts, service and repair division offer 24 hour nationwide breakdown assistance, quick parts supply, low cost maintenance contracts, and are founder members of the TMATA Crash Cushion certification scheme.



SERVICE

With an approved repair facility in Market Harborough and multiple mobile engineers trained to work on **all** current makes of crash cushions and light arrows, King Highway's service and backup is the only vehicle service traffic management operators need.



MARKET HARBOURGH REPAIR FACILITY

Safety Vehicle Hire & Lease (SVHL) operate one of the largest and newest fleets of impact protection vehicles for hire in the UK. With a range of flexible rental options designed to meet different operators requirements, from short term weekly rental to long term contract hire on a tailor made vehicle, SVHL can offer a cost effective solution to the supply of your next Traffic Management Vehicle.

EQUIPMENT TYPES

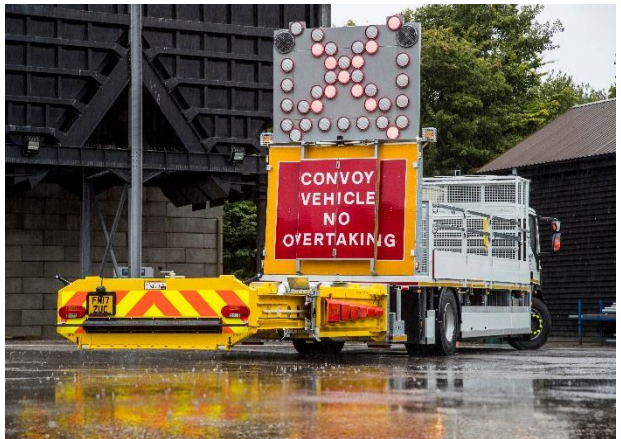
With one of the largest and newest fleets of Impact Protection Vehicles for hire in the UK, there is a varied choice of specification. All vehicles are fitted with 70MPH Crash Cushions and all new vehicles are fitted with 6 camera recording systems and FORS cycle safety equipment.

SVHL's range of TM Products extends to 3.5t and 7.2/7.5t Installation vehicles fitted with mini light arrows.

With a schedule of new vehicles always in build, SVHL are able to offer a bespoke specification and quick delivery on new equipment

RENTAL PACKAGES

SVHL offer a range of cost effective rental packages to suit requirements, from short term weekly hire, to a tailored long term rental contract complete with maintenance on a bespoke new vehicle. Available with or without maintenance and tyres, giving the customer the option to choose the deal that works best for them.



MAINTENANCE & BACK UP

Vehicles are supplied complete with 24/7 maintenance and breakdown back up via SVHL's own rental team, so you'll always speak to someone who knows your vehicle and its function. Using a nationwide network of approved maintenance providers, SVHL's quick response is guaranteed.

7.5T INSTALLATION VEHICLE WITH LP13



SVHL use the R2C Online package for fleet compliance, giving the hirer a unique log in for direct access to the vehicles documents and inspection sheets, along with service planners and vehicle defect reports.

DELIVERY AND COLLECTION

Quick nationwide delivery and collection is available to ensure you have your vehicle or trailer where you want it, when you want it.

TRAILER & PLANT BODY RENTAL, LEASING AND CONTRACT HIRE

SVHL also offer short, medium and long term rental on King Trailers and Plant Body vehicles. From competitive weekly rates on an up-to-date King GTS44, to a brand new 26t Plant Body truck on a long term rental package, SVHL can tailor a hire to your specific requirements.



KING TRANSPORT EQUIPMENT

King Transport Equipment handles projects from concept to delivery, developing the widest range of transport and material handling equipment solutions. With over 55 years in the industry and an extensive 3D CAD facility, King can engineer solutions to suit any specialist transport requirement, working independently or with other specialists to project manage and deliver custom solutions. In-house 3D CAD facilities allow the customer to view the solution before manufacture.

SPECIALS

For your special transport requirements, King can work with you to design and manufacture a bespoke solution. Whether it be forklifts, planes, video and staging equipment or hospitality, King can provide a solution.

HANDLING AND TRANSPORT OF NUCLEAR WASTE

King is a major supplier of various trailers and transport solutions, including: flask carriers; drum transfer trailers; effluent waste tank trailers; swing thru trailers; overpack transport trailers. Working closely with the end user and other stakeholders to develop safe, efficient systems.

AEROSPACE

In the aerospace industry, King is a trusted supplier of transport systems for extremely high value loads. Wings, engines, fuselages, and helicopters, both on the road and around site. King offer high integrity solutions for valuable loads.

GTS44 WITH CURTAIN SIDER



FLASK CARRIER



AEROSPACE



DEFENCE

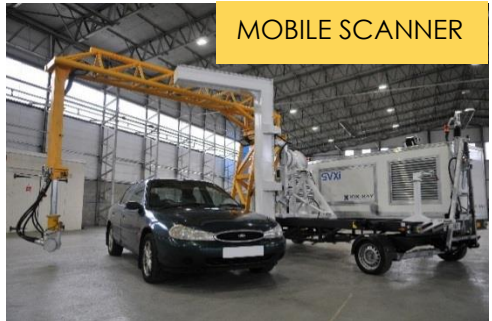
A major supplier of military transport solutions for many years, King's portfolio of success is extensive. Logistics vehicles, ammunition, aircraft, helicopters and tracked combat equipment are regularly carried on King equipment.



DEFENCE

MOBILE SCANNER

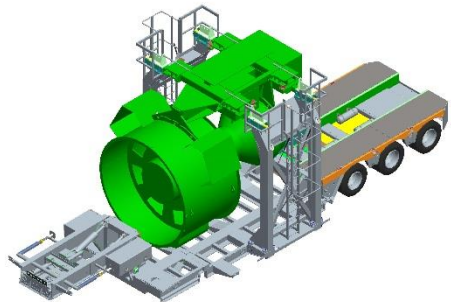
Many customers look to King to provide solutions to make their own manufactured equipment mobile. If you have equipment that could be used in several locations talk to King to mobilise it.



MOBILE SCANNER

CONCEPT MODELLING

King are able to provide a bespoke service from concept through to completed manufacture.



CONCEPT MODELLING

KEY MARKETS

- Nuclear
- Defence
- Aerospace
- Oil services
- Handling and lifting
- Infrastructure maintenance
- Power generation
- Rail
- Utilities
- Automotive
- Motorsport
- Outside broadcast

The King Advanced Variable Message System (AVMS) provides unparalleled visibility and clear information to drivers. The flexibility of the AVMS package allows it to be used within a wide variety of applications, whether it be smart or conventional motorways or urban traffic systems. The modular, full matrix display is capable of displaying an almost infinite range of pictograms, aspects and legends.

STATE-OF-THE-ART DISPLAY TECHNOLOGY

The King AVMS system benefits from the latest technology in surface mounted LEDs and the most stringent of testing and alignment to ensure the most efficient and highest optical performance possible.

The system has been designed and developed to allow compliance with UTMIC and the latest EN12966 specifications. The power requirements for the signs are one of the lowest available offering very high efficiency at site.



KING FIXED SIGNS – THE NAME TO TRUST

King has been synonymous with the UK's transport engineering industry for over six decades and as part of the Martin Group of Companies, now offers an even larger portfolio of services to the country's transport sector.

The Martin Group of Companies

The King Group of Companies are wholly owned by The Martin Group.

DELIVERING ESSENTIAL SERVICES TO MAINTAIN AND IMPROVE THE UK'S TRANSPORT AND WASTE RECYCLING INFRASTRUCTURE

The Martin Group has been successfully providing specialist services to the public and private sectors for over 40 years. We provide truly national coverage through our network of 16 regional offices, led from our headquarters in Derbyshire.

WORKING IN PARTNERSHIP WITH OUR CLIENTS TO DELIVER INTEGRATED SERVICES AND SUSTAINABLE SOLUTIONS

Our major clients include Highways England, Network Rail, local authorities, the Ministry of Defence and numerous major contractors and utility companies. We work with our clients and local communities across the country to drive economic growth and generate social and environmental benefits.

SUPPORTING KING

The Martin Group provide King with wider Group resources, facilitating further product development and providing access to real operational environments for their product range.



GROUP OF COMPANIES

www.hwmartin.com

01773 813214

enquiries@hwmartin.com



Group of Companies

Riverside
Market Harborough
Leicestershire
LE16 7PX
01858 467361
www.king.uk.com



T: +44 (0) 1858 467361
E: info@kingtrailers.co.uk
W: www.kingtrailers.co.uk



T: +44 (0) 1858 434306
E: info@kinghighway.co.uk
W: www.kinghighway.co.uk



T: +44 (0) 1858 438650
E: info@skyking.co.uk
W: www.skyking.co.uk



T: +44 (0) 1858 434306
E: info@safetyvehicles.co.uk
W: www.safetyvehicles.co.uk



T: +44 (0) 1858 467361
E: info@kingprojects.co.uk
W: www.kingrail.co.uk



T: +44 (0) 1858 467361
E: info@kingavms.co.uk
W: www.kingavms.co.uk

